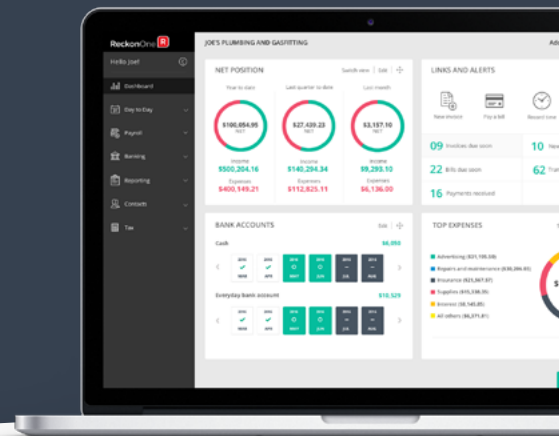


INTRODUCING NEW RECKON ONE MODULES

Time & Employee expenses

If you would like to access these new features, simply customise your modules under 'Settings' on your book tile after signing into Reckon Portal.

See below for a full break down of included features & pricing.



Time

	Lite	Medium
	\$3	\$5
Daily & weekly timesheets.	•	•
Track hours for employee time worked.	•	•
Print timesheets.	•	•
Project reporting ^		•
Bill time. *		•
Timesheets tracked against projects or customers. *		•
Bill time against projects or clients. *^		•
Track expenses against suppliers.		•
Timesheet approval.		•
Use Timesheet entries to create pay runs. **		•

* Requires the Invoices module.

^ Requires the Projects module.

** Requires the Payroll module.



Employee Expenses

	Lite	Medium
	\$3	\$5
Employee expense tracking.	•	•
Enter employee expense claims in a batch.	•	•
Project reporting. ^		•
Bill expenses to clients. *		•
Bill expenses against projects. ^		•
Track employee expenses against suppliers.		•
Attach receipts to expense claims.		•
Expense claim approvals.		•

* Requires the Invoices module.

^ Requires the Projects module.

